



Elected Members Forum

24th October 2018

10:00 - 12:30



Agenda

- Introductions and apologies
- Minutes and matters arising from the last meeting
- Humber Strategy Comprehensive Review progress
 - Objective
 - Strategic Approaches
- Sustainability Appraisal
- Update on Local Plans
- Engagement
- Update on other work
- AOB
- Close



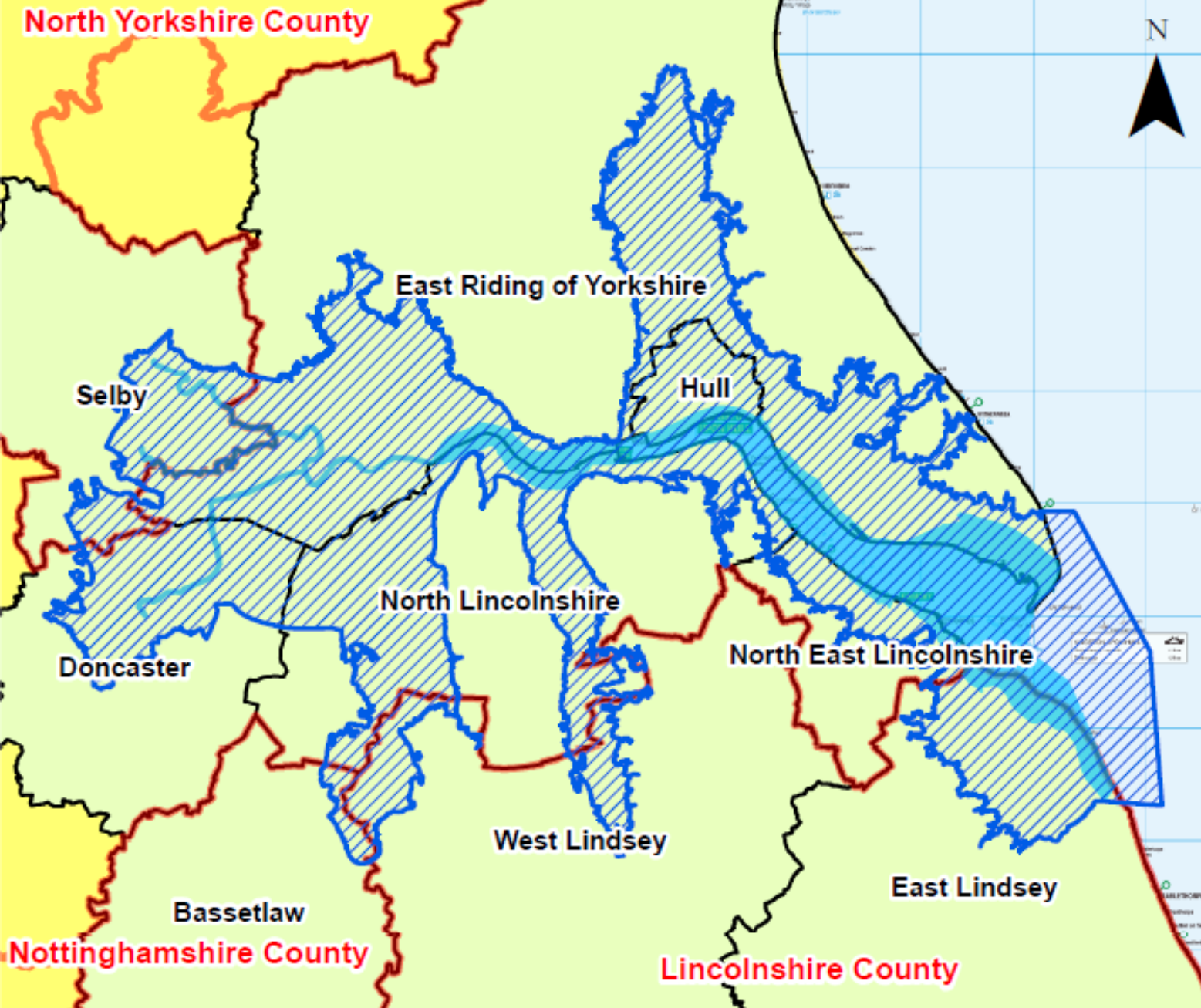
Actions from the previous meeting

Action	Owner	Status
To discuss how the HSCR ties with planning and growth for inclusion in the Objectives	EA	Complete
To seek formal agreement for the short-list from the Local Authorities	EA	Complete



Humber Strategy Comprehensive Review progress





Study Area:
660,000 people
290,000 properties
73,000 businesses
165,500 hectares of land
Major industry
UK's largest port complex

The EA, LAs and the Humber LEP will work in partnership to **support sustainable development and a prosperous Humber.**

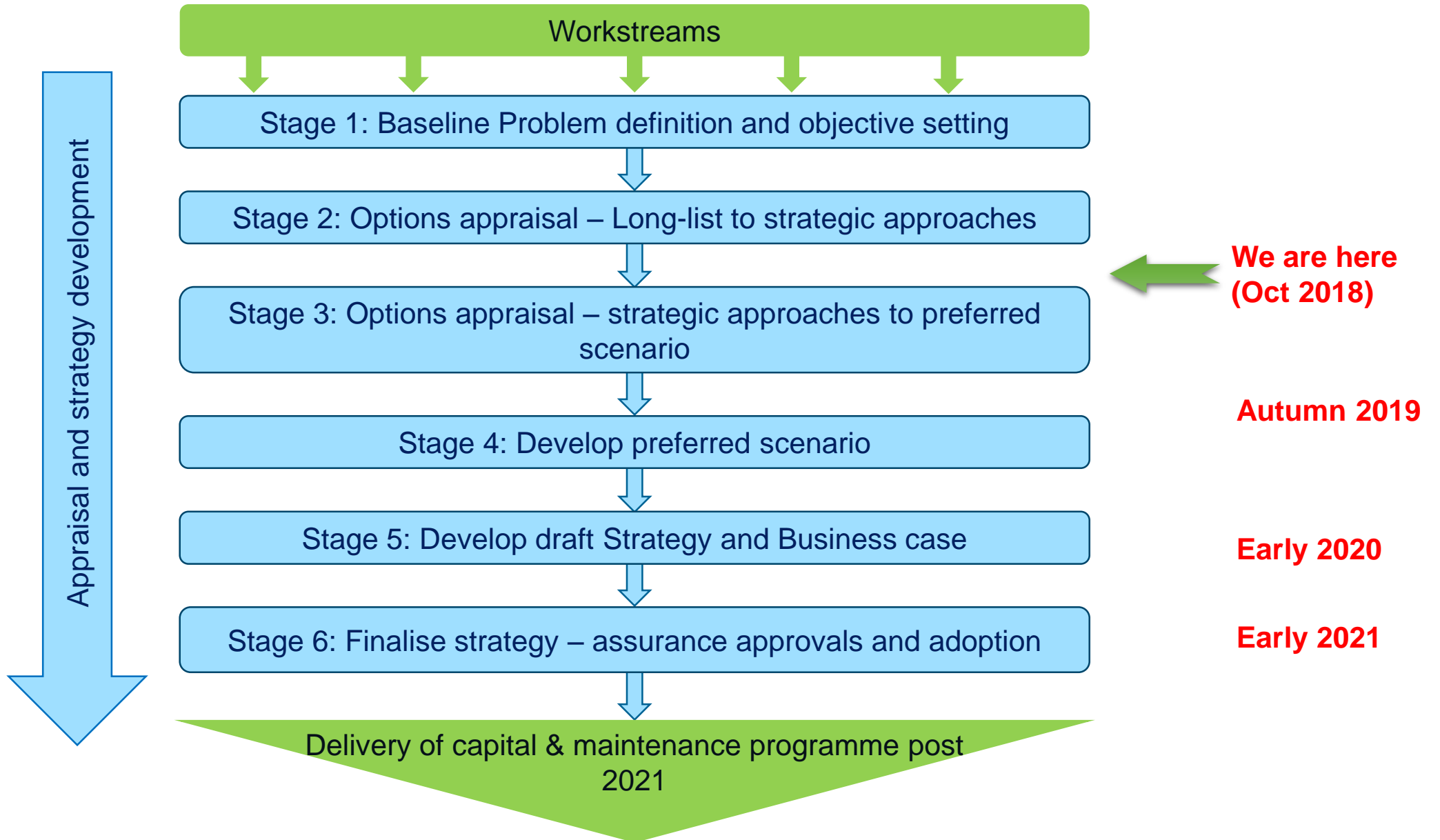
We will do this by redefining the strategic approach to managing tidal flood risk on the Humber for our communities and the Country, setting the way forward for the next 100 years taking into account predicted sea level rise and climate change



Progress with appraisal

- Prior meeting (May 18)
 - outcome of long-list appraisal agreed
 - Introduced a pathway approach and 3 proposed approaches
- Current stage
 - Development of the three strategic approaches
 - Development of appraisal method
- Discussed with 11 of 12 LA Directors
 - Pathway approach supported
 - 3 strategic approaches supported
- Paper being finalised for agreement





VISION + OBJECTIVES

DESIGN PRINCIPLES
APPRAISAL CRITERIA

STRATEGY COMPONENTS
STANDARD OF PROTECTION
STRATEGIC MEASURES
FUNDING OPTIONS

LONG LIST

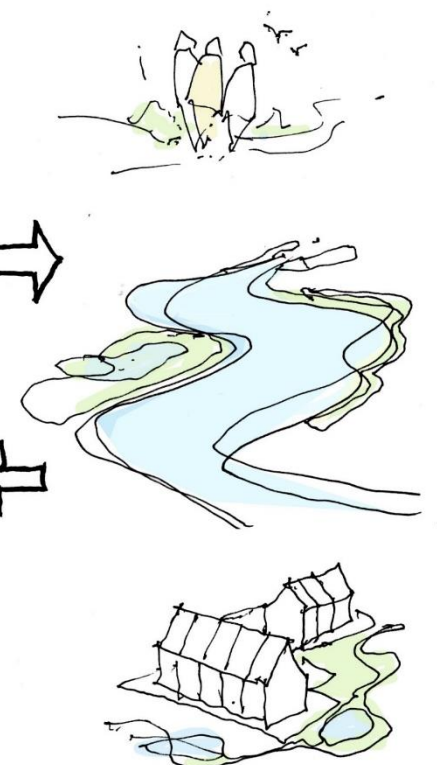
SHORT LIST

STRATEGY

DRIVERS + OPPORTUNITIES

BASELINE

2020 2050 2080 2100
DECISION POINTS
ALTERNATIVE FUTURES



START UP & OBJECTIVES

LONG LIST

SHORT LIST TO PREFERRED OPTION

STRATEGY

IMPLEMENTATION



Overarching elements of all strategic approaches

- Three time periods – short, medium and long
- Level of risk - variable, variable with minimum, consistent
- Funding & investment
- Linking of benefit areas
- Recognition that major change in approach likely to be needed in the long term

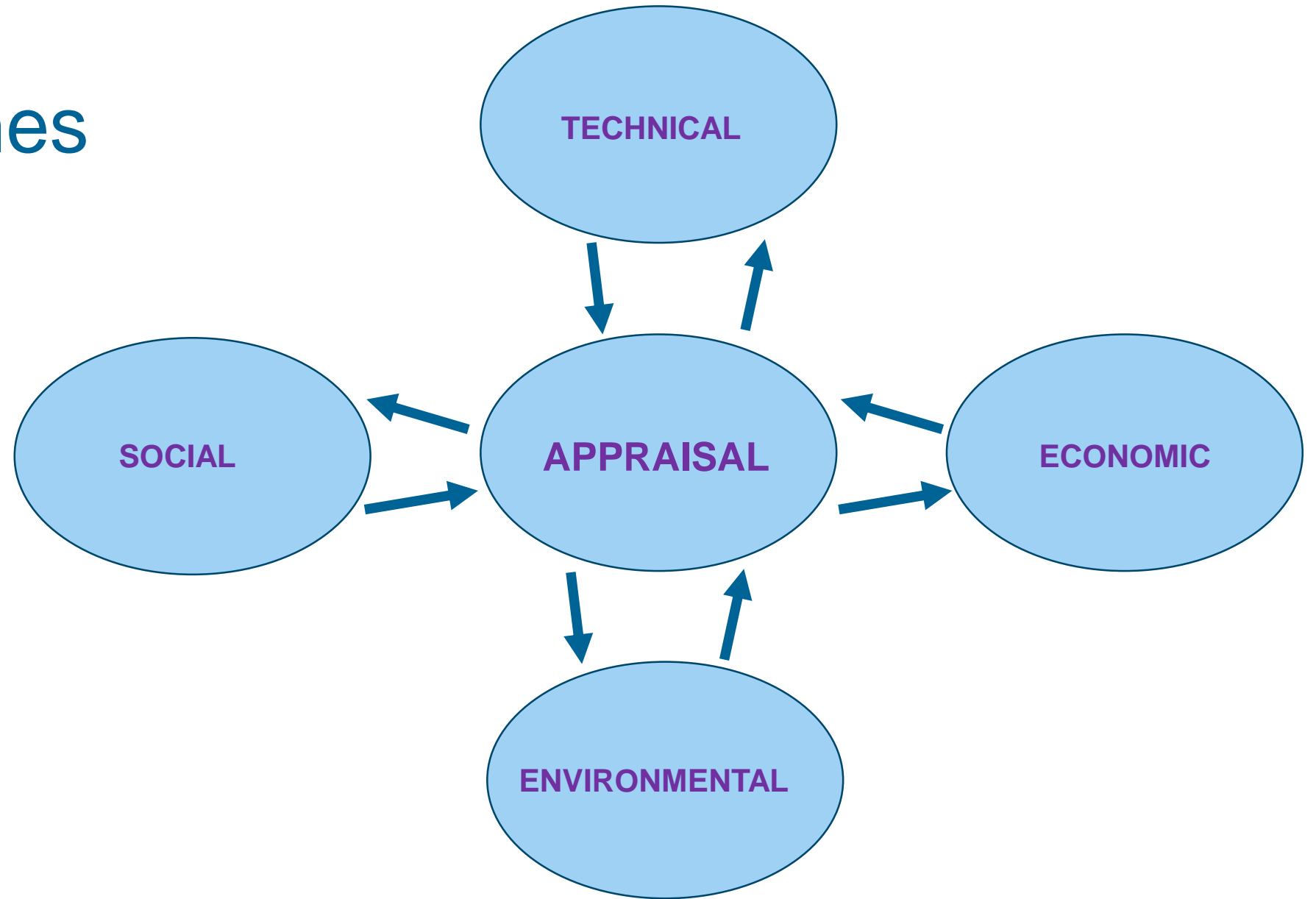


Introducing the three strategic approaches

- Containing the tide
- Keeping out the tide
- Adapting to the tide



Strategic Approaches Appraisal



Sustainability Appraisal



Sustainability Appraisal & Criteria

- The Sustainability Appraisal process will influence strategy development, inform decision-makers of the potential environment, social and economic impacts of the proposed approaches.
- It will:
 - Assist the selection of strategic approaches and preferred pathway; and
 - Help refine strategic approaches to make them more sustainable



Sustainability Appraisal & Criteria

- Sustainability appraisal for this next stage will look at each of the strategic approaches against an agreed set of objectives for
 - Social
 - Economic
 - Environmental impacts
- Scoring system being used
- Will consider each strategic approach at flood area level



Objectives of Sustainability Appraisal

POPULATION

CLIMATE CHANGE
ADAPTATION

MATERIAL
ASSETS

WATER
RESOURCES

AGRICULTURAL &
FARMING LAND

LOCAL AND
WIDER ECONOMY

CIVIC
AMENITIES

HABITATS

ECOLOGICAL
CORRIDORS

TOWNSCAPES,
LANDSCAPES &
SEASCAPES

BIODIVERSITY

CULTURAL
HERITAGE
ASSETS

GREENSPACES

GEOMORPHO-
LOGICAL
PROCESSES



Update on Local Plans

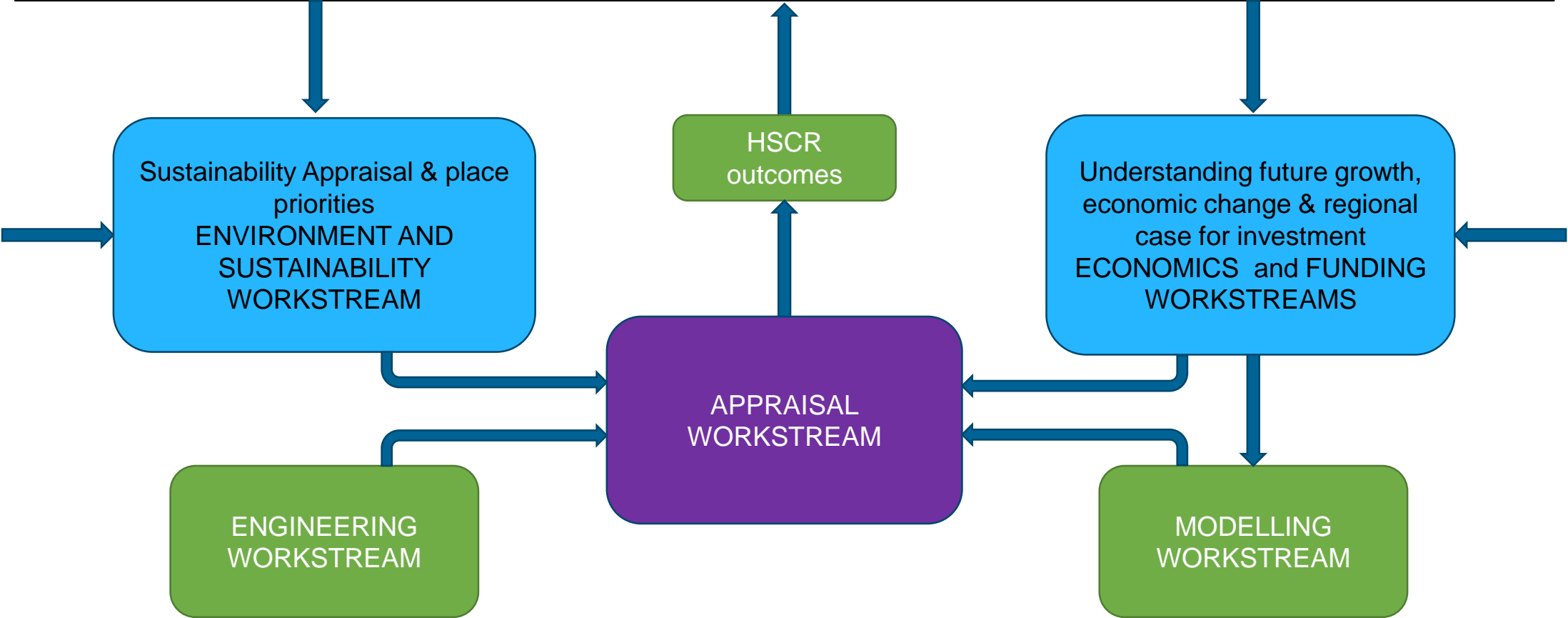


Local Plan/HSCR alignment

- Develop a timetable of Plan development alongside the HSCR programme
- Develop an Action Plan and agree ownership of actions
- Officers Group take ownership of ensuring progress of this action plan – regular reporting to be fed into the Group



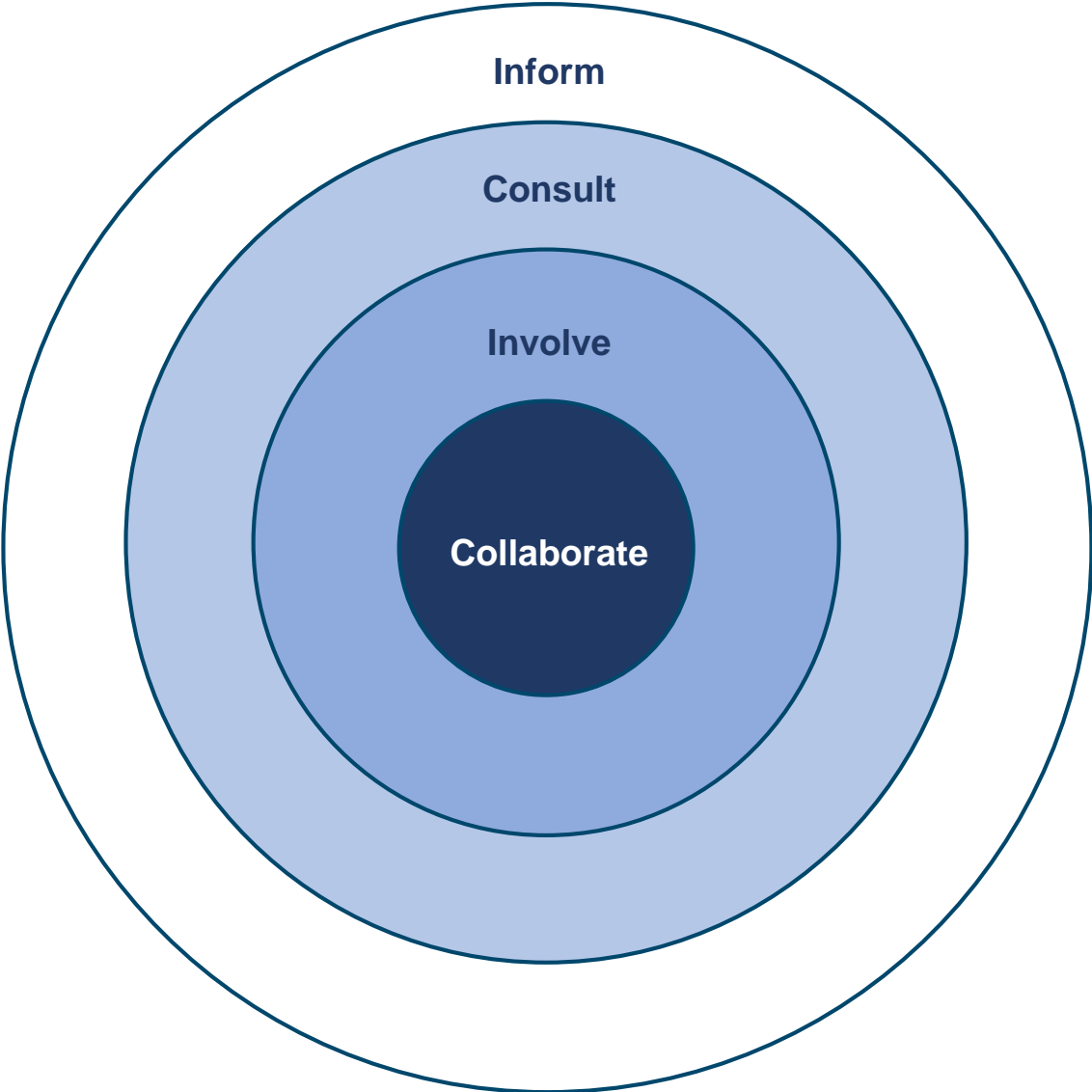
Local Plans, Planning and Site Allocations



Engagement



Engagement overview



Public consultation

- Must give people the opportunity to influence our decision making
- Must describe what we are doing in a way that makes sense to communities
- Must be done as a partnership – this will be challenging on such a large scale



Consultation as a partnership

- For this to work effectively we would like to understand:
 - What issues will we need to manage in your areas?
 - What will help you and your colleagues take ownership of the consultation, and what might hinder you?



Ongoing Comprehensive Review activities & next steps (1)

- Technical: Finalising approach for assessment of flood risk, analysing information on the existing flood defences and ground conditions, considering future monitoring approach
- Economics: Deciding on the future approach to Benefit Apportionment for the project, drawing as best we can on previous work done for Hull; looking at how Natural Capital can be played into the Economics assessment, and at the way the Ecosystems Services assessment will be undertaken; how we link benefits; how we consider growth
- Funding & Investment: Agreeing approach to developing a funding strategy with partners; discussed initial funding ideas and criteria for evaluating these; alignment with Local Plans



Ongoing Comprehensive Review activities & next steps(2)

- Environmental: Next stage of Landscape and Investment Study under way; new assessment of the extent of habitat loss is under way (and links with national coastal squeeze project); looking at how to address achieving Good Ecological Potential.
- Engagement: Reviewing the engagement plan; website; wider awareness-raising that the review is underway.



Other key projects

- **Humber Hull Frontage** – Funding secured for £42m scheme to reduce the risk of flooding to 113,000 homes and businesses. Completion by end of 2020.
- **Skeffling Managed Realignment** – 300ha intertidal and 75ha of supporting wet grassland habitats. Aim to start construction in 2019, completion in 2021
- **South Ferriby** - reduce the risk of tidal flooding to 140 homes, businesses and the CEMEX plant. Bid for Defra Growth Funding successful. Planning Application to be submitted Autumn 2018



AOB



Close

Thank you for attending



Spare



SA Objectives

1. To manage risk of flooding to the existing and the growing **population**, including the socially vulnerable population
2. To maintain or improve access links to **civic amenities, greenspaces** and to minimise impact on viability of **settlements**
3. Manage the flood risk to support and where possible enhance the **local and wider economy**
4. To minimise loss of **agricultural and farming land** and to promote soil remediation
5. To support the operation and maintenance of existing and proposed **material assets**
6. Conserve and enhance **habitats, biodiversity, ecological corridors** and create enabling environments for biodiversity



SA Objectives (cont)

7. To manage risks from tidal flooding to **water resources** and to maintain or enhance the water environment
8. To facilitate natural estuarine **geomorphological processes**
9. To manage, conserve and/or enhance the character and quality of **townscapes, landscapes and seascapes**, maintaining and strengthening local distinctiveness and sense of place
10. To manage, maintain and enhance **cultural heritage assets** and the historic environment
11. To enable **climate change adaptation** and resilience and to enhance carbon management opportunities



Examples of issues to consider

Issue	Workstream	Mechanism for addressing them
Using Local Plan policy and allocations (place priorities) to inform the development of strategic approaches	Environment and Appraisal	Policy and allocations as evidence base to inform testing and refining of approaches
Use of the HSCR and evidence to inform Local Plans development	Modelling and Environment	Modelling outputs Landscape and investment Study Usual planning engagement
Using Local Plans and Policies to help delivery the outcomes of the HSCR and support	Environment	Safeguarding Land

