



# Association of Drainage Authorities Health and Safety Management

Ian Benn – Dip Nebosh, PG Dip Health, Safety  
and Environmental Law, Grad IOSH, MCQI CQP



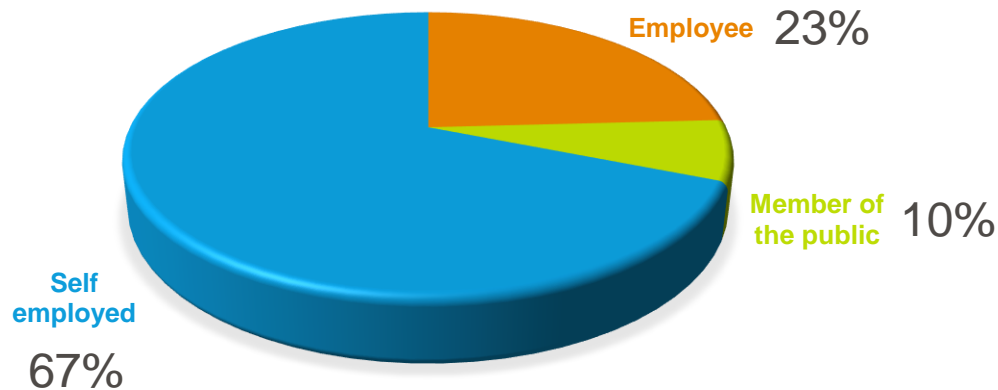


# Health and Safety, Why?



- 2016/7 – 30 people killed
- The worker fatal injury rate is 6 times higher than in construction and 20 times than across all industries

## EMPLOYMENT STATUS



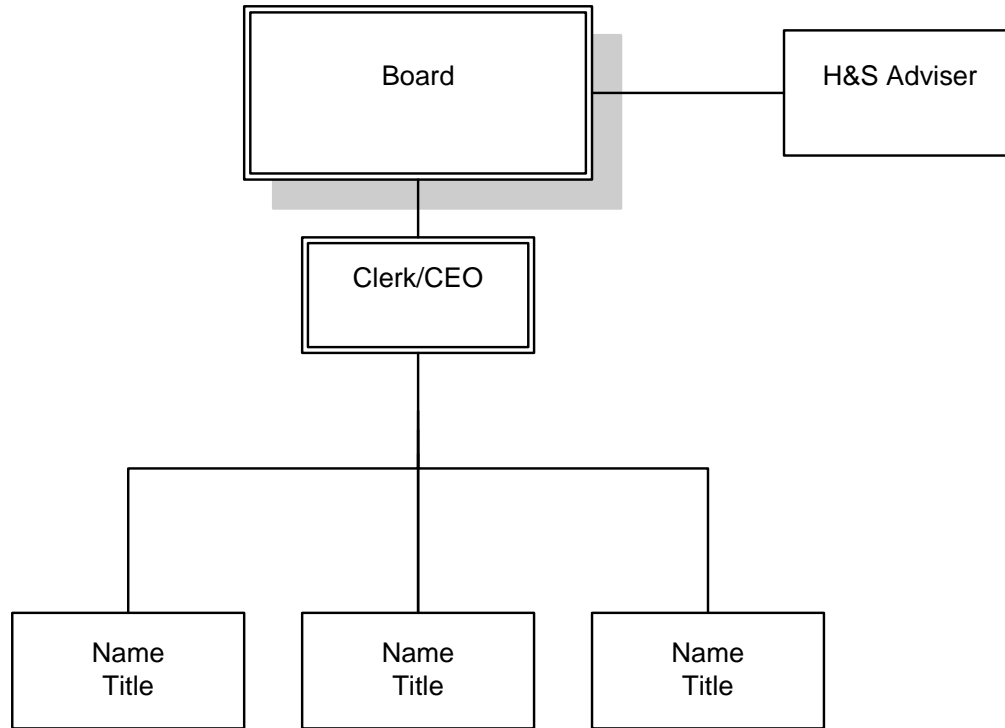
	Employee	Member of the public	Self employed	Total
Agriculture	7	3	20	30



- Health and Safety at Work etc Act 1974 (the HSW Act), you have to ensure, so far as is *reasonably practicable*, the health and safety of yourself and others who may be affected by what you do or do not do. It applies to all work activities and premises and everyone at work has responsibilities under it, including the self-employed
- Employees must take care of their own health and safety and that of others who may be affected by their actions at work. They must also co-operate with employers and co-workers to help everyone meet their legal requirements
- The Management of Health and Safety at Work Regulations 1999 also applies to every work activity and workplace and requires all risks to be assessed and, where necessary, controlled



# Organisational Structure

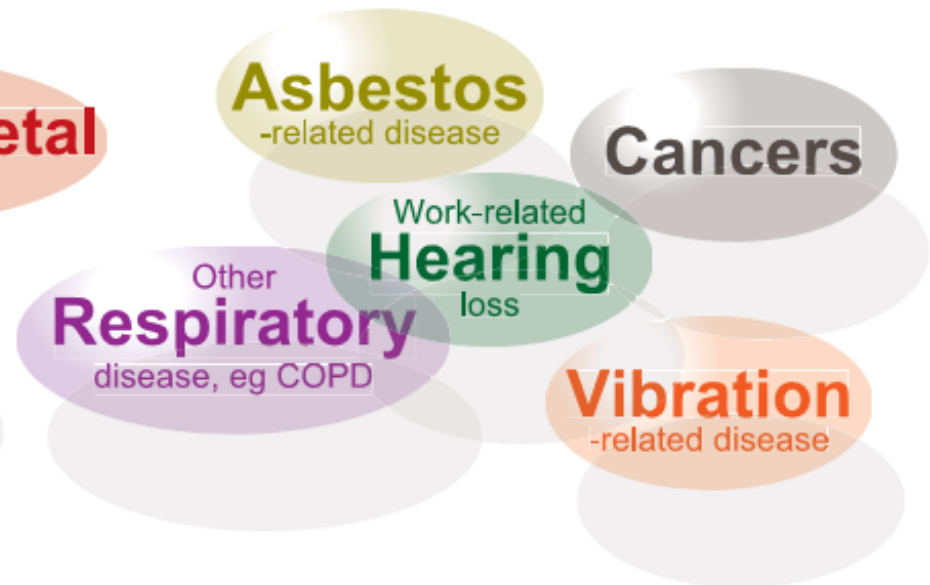




**Common health** conditions  
which can be caused or made worse by work



**Long-latency** conditions  
which can be caused by previous work activity and  
where symptoms can appear many years after exposure





## Competence - HSE



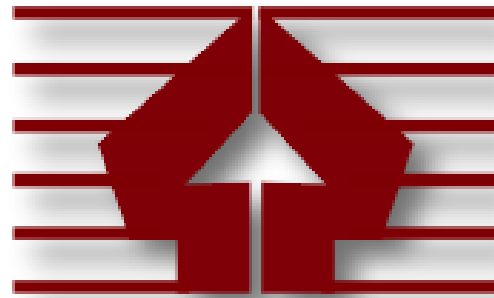
- HSE: You must get help from a competent person to enable you to meet the requirements of health and safety law
  - Sufficient training and experience or knowledge and other qualities that allow them to assist you properly
  - The level of competence required will depend on;
    - the complexity of the situation and
    - the particular help you need
  - Recommend: Give preference to those in your own organisation who have the appropriate level of competence (which can include the employer themselves) before looking for help from outside. You must consult health and safety representatives in good time on the arrangements for competent help
-



Health and Safety Executive



Shire  
Group of IDBs



**HSE**  
**Health & Safety**  
**Executive**





Fact or fiction?

---



**Safety, tends to focus on the negative.....**

---



### Farmers Weekly

- **Farmers urged to report dangerously low power lines**
- The Health and Safety Executive (HSE) has urged farmers to report power lines that are below the minimum legal height across farmland.
- HSE head of agriculture Rick Brunt *'Power lines over farmland were involved in some 1,000 incidents or strikes each year'*.
- *'A thousand strikes is potentially 1,000 deaths, we are very, very lucky there are only one or two per year'*.



# ADA Opportunity?

---



- Promote best practise and beyond
-



# Any questions?



---

**Ian Benn**  
**Shire Group of IDBs**  
Epsom House  
Chase Park  
Redhouse Interchange  
Doncaster  
South Yorkshire  
DN6 7FE

+44 (0)1302 337798

+44 (0)7885890220

[ian.benn@jbaconsulting.com](mailto:ian.benn@jbaconsulting.com)

[ian.benn@shiregroup-idbs.gov.uk](mailto:ian.benn@shiregroup-idbs.gov.uk)